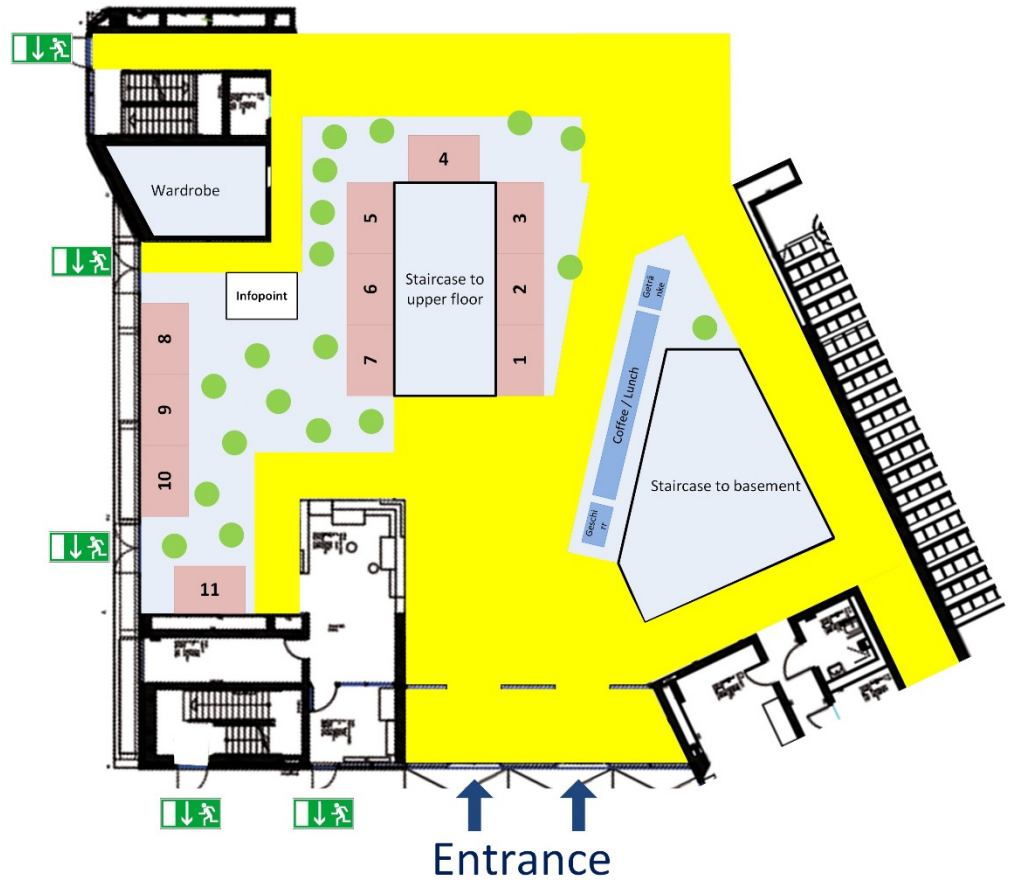


INFORMATION FOR EXHIBITORS

Exhibition Area



Fees

Exhibitor Package

1 full participant, 4 supervisors (no access to presentations, no proceedings) and 1 booth

- Package price 3.000,- €
- For ASIM corporate members 2.100,- €
- Additional booth, 180,- € per block
- Fixed booth selection, 100,- € per block

Mini Package

1 full participant, 1 supervisor and 1 booth

- Package price 1.500,- €
- For ASIM corporate or institutional members 1.100,- €
- Alternatively for personal members 200,- € discount
- 40 % discount on universities

All prices are subject to 19% VAT.

Further details on packages and fees can be found on the ASIM website.

A booth (approx. 2 x 3 m) including 230-volt power supply is provided. Lightings, tables and chairs may be offered on enquiry for an extra charge. Please give us an outline of your ideas for your exhibition booth.

Contact Exhibition

Dipl.-Wirtsch.-Ing. Tim Peter
Fachbereich Maschinenbau

Institut für Produktionstechnik
und Logistik

Produktionsorganisation und
Fabrikplanung

Fon: +49 (0) 561 804 - 1853
Fax: +49 (0) 561 804 - 1852
asim17@uni-kassel.de

Universität Kassel
Kurt-Wolters-Straße 3
D-34125 Kassel